

S P E C F I L E

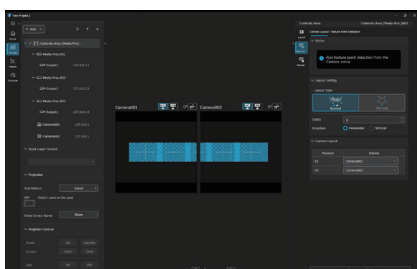
Product Name : **Visual Software Suite 2.0**



Overview

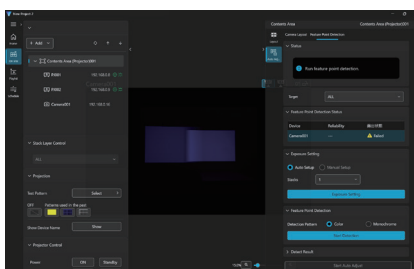
Visual Software Suite 2.0 (VSS 2.0) is a free, Windows®-based platform that combines multiple functions into one intuitive graphical interface, enabling swift and efficient setup and onsite adjustments. Integrating and enhancing the capabilities of previously separate Panasonic software, it transforms your workflow into streamlined and cost-effective processes.

Software Highlights



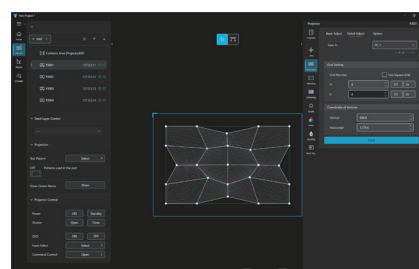
Intuitive User Interface

- Simple to learn and master
- Easy navigation through four screens in operational order



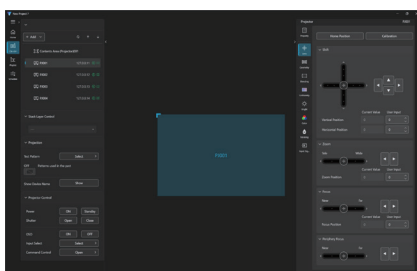
Auto Calibration

- Auto geometry correction, blending, black level adjustment, color matching¹, and content splitting²
- Click to define the image projection area
- Works with one or more Nikon or IDS cameras



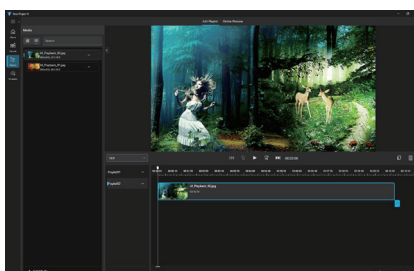
Warping & Color Adjustment

- Distortion correction, detail adjustment, free-shape masking
- Uniformity³, color, brightness adjustment and control³
- Manual edge blending adjustment



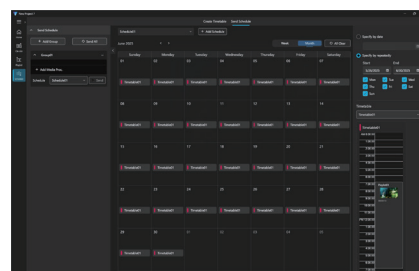
Projector Control³

- Lens shift, zoom, focus, and peripheral focus⁴
- Projector settings access via browser
- Power on/standby, shutter open/close
- Test pattern selection
- Command control, etc.



Playback Management²

- Supports multiple playlists
- Supports gapless media looping to prevent screen blanking
- Supports playback via external UDP commands
- Preview content on PC screen or projection screen



Automation & Scheduling²

- Create custom schedules for automated daily playback
- Simple, intuitive, labor-saving operation

¹ Performed at the projector level only.

² Described functions require use with an optional ET-FMP50 Series media processor.

³ Described functions requires use with compatible projectors.

⁴ Function supported on compatible projectors only. Please consult individual product specification for more information.

System Requirements

OS	Microsoft Windows 11 (Windows 11 Home/Pro 64bit) Microsoft Windows 10 (Windows 10 Home/Pro 64bit)
CPU	Intel Core i5 (4-core) or higher
Memory	16GB or more
Available disk space	16GB or more (further available space is necessary to save content data)
Display	Resolution of 1600 x 900 pixels or higher
USB port	USB 2.0 or higher (when performing auto screen adjustment using a camera connected by USB)
LAN port	100Base-TX/1000Base-T
Switching hub	Must support PoE (Power over Ethernet) power supply (IEEE802.3af), and have a power supply compatible port that supports 1000BASE-T (when performing auto screen adjustment using a camera connected by LAN)

Note

- Smooth playback of movies may not be possible even in the above environment. When handling highresolution movies, we recommend an Intel Core i5 CPU or higher that is 11th generation or later.
- Note that the operation is not guaranteed when used in any system environment other than above (GPUs other than those manufactured by Intel, etc.), or when a home-made computer is used.

This does not guarantee the operation with all the computers fulfilling the above conditions.

Applicable Cameras

USB connected camera Nikon D5200/D5300/D5500/D5600/D7500/Z50/Z5
 LAN connected camera IDS GV-5890CP-C-HQ

Note for Camera

- -In the case of 1 camera, you can select up to 4 projectors horizontally, up to 4 projectors for vertically, and up to 6 projectors stacked¹.
- - You can set 5 or more projectors either horizontally or vertically by using multiple cameras. The relationship between the number of projectors and the number of cameras is as follows.

Number of projectors	1 to 4	3 to 7	4 to 10	5 to 13	6 to 16	7 to 19
Number of cameras	1	2	3	4	5	6

- -In the case of a 360-degree curved screen, there needs to be 5 or more projectors and 3 or more cameras arranged vertically or horizontally.

Number of projectors	5 to 9	5 to 12	5 to 15	6 to 18
Number of cameras	3	4	5	6

¹ Adjustments in stack configuration and adjustments for a 360-degree curved screen are not supported when controlling the media processor ET-FMP50 series.

Applicable Product Models

Please refer to the website below for detailed information.
<https://docs.connect.panasonic.com/projector/products/vss/>

Content that can be registered

When used in conjunction with the ET-FMP50 series media processor, this product enables content registration and playback configuration. You can register the following still image files and movie files as media in this software.

Still image	Extension	Format	Restriction
	jpg/jpeg	JPEG	Number of pixels: Maximum 9600 x 6400 (only baseline supported) YUV format: Only YUV420, YUV422, and YUV444 supported Color mode: Unsupported
	png	Portable Network Graphics	Number of pixels: Maximum 4096 x 4096 Number of bits: 24 Transparent: Unsupported
	bmp	Windows Bitmap	Number of pixels: Maximum 4096 x 4096 (only 1-bit, 4-bit, 8-bit, and 24-bit supported) Following formats are not supported. Run-length encoding, Bit fields, Top to bottom, Transparent data

	Extension	Codec		Restriction ¹	
		Video	Audio	Video	Audio
	mp4	H.264/MPEG-4 AVC H.265/HEVC	MPEG-4 AAC-LC	<ul style="list-style-type: none"> Resolution <ul style="list-style-type: none"> With H.264/MPEG-4 AVC <ul style="list-style-type: none"> Maximum: 3840 x 2160 Minimum: 240 x 180 With H.265/HEVC <ul style="list-style-type: none"> Maximum: Total number of pixels: 18 million (long side 7680 or less) Minimum: 240 x 180 Frame rate <ul style="list-style-type: none"> 25 fps/30 fps/50 fps/60 fps Bit rate <ul style="list-style-type: none"> Maximum 300 Mbps YUV format <ul style="list-style-type: none"> Only 4:2:0 supported Supported profiles <ul style="list-style-type: none"> With H.264/MPEG-4 AVC²: <ul style="list-style-type: none"> Baseline Profile/Main Profile/ High Profile With H.265/HEVC: <ul style="list-style-type: none"> Main Profile³ 	Sample rate: 44.1 kHz, 48 kHz Channel: 2 ch, 0 ch (no audio) Bit width: 16 bit
	mov	HAP (HAP 1) HAP Q ⁴	MPEG-4 AAC-LC	<ul style="list-style-type: none"> Resolution <ul style="list-style-type: none"> Maximum: 3840 x 2160 Minimum: 240 x 180 Frame rate <ul style="list-style-type: none"> With HAP (HAP 1): <ul style="list-style-type: none"> 25 fps/30 fps/50 fps/60 fps With HAP Q: <ul style="list-style-type: none"> 25 fps/30 fps The Snappy codec option is not supported. HAP Alpha and HAP Q Alpha are not supported. 	

1 Multi-angle video is not supported.

2 Constrained Baseline Profile, Extended Profile, and Hi10P/Hi422P/Hi444P are not supported.

3 Following profiles are not supported.

Main 10, Main 12, Main 422-10, Main 422-12, Main 444-8, Main 444-10, Main 444-12

4 Following models do not support HAP (HAP 1) / HAP Q codec.

ET-FMP20, ET-SBFMP10

Note

- Some information for still image/movie files can be viewed with a computer where relevant files are accessible.
Operation example
 - For Windows computer
 - Right-click a file, and click [Properties].
 - Click the [Details] tab.
- A movie file cannot be used if its playback time is less than ten seconds or its playback time information cannot be acquired.
- The maximum number of characters for content file names is 80 characters.
- Files protected by DRM (Digital Rights Management) cannot be used.
- Some files listed as compatible formats may still not be able to be used.